

# Hypertherm®

**powermax1650® G3 SERIES™**

**Machine torch parts**

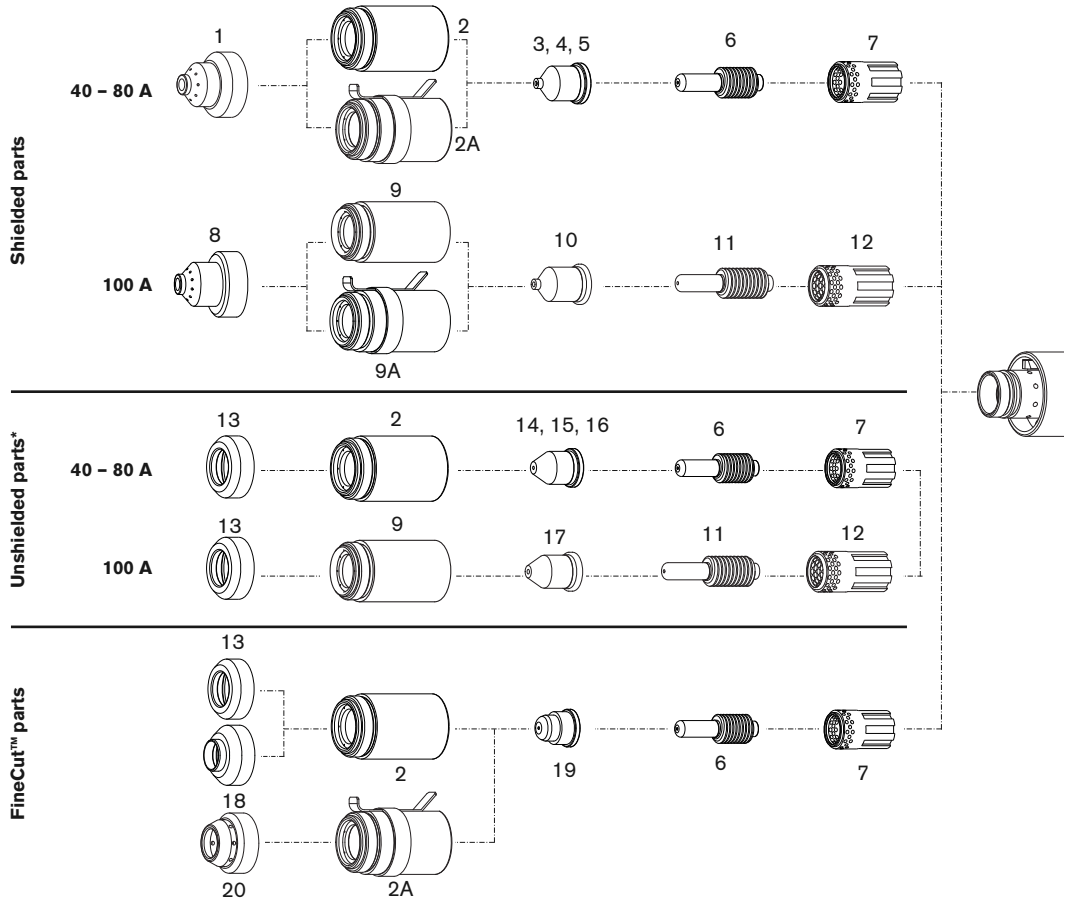
**T100 consumables**



**Powermax1650**



**T100M-2 torch**



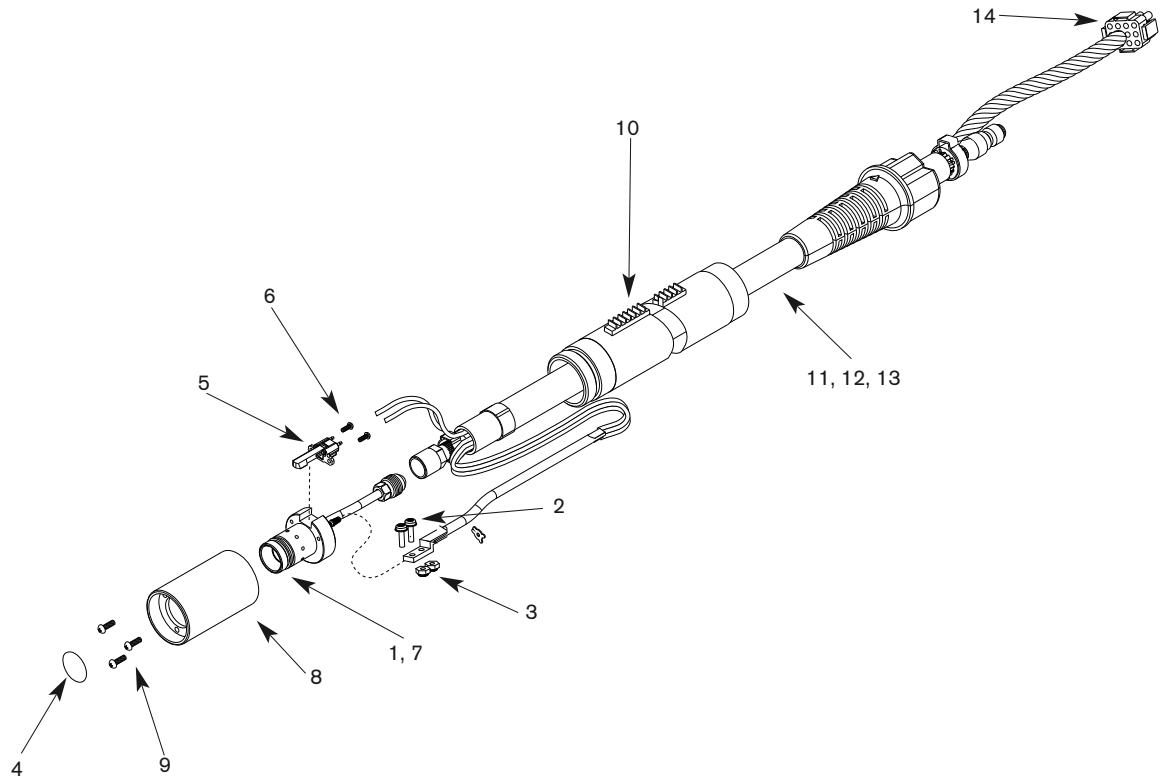
	DESCRIPTION	100 AMP		80 AMP		60 AMP		40 AMP		QUANTITY PER PACKAGE
		ITEM NUMBER	PART NUMBER	ITEM NUMBER	PART NUMBER	ITEM NUMBER	PART NUMBER	ITEM NUMBER	PART NUMBER	
Shielded parts	Shield	8	220047	1	120930	1	120930	1	120930	1
	Retaining cap	9	220048	2	120928	2	120928	2	120928	1
	Retaining cap, ohmic	9A	220206	2A	220061	2A	220061	2A	220061	1
	Nozzle	10	220011	5	120927	4	120931	3	120932	5
	Electrode	11	220037	6	120926	6	120926	6	120926	5
	Swirl ring	12	220051	7	120925	7	120925	7	120925	1
Unshielded parts*	Deflector	13	120979	13	120979	13	120979	13	120979	1
	Retaining cap	9	220048	2	120928	2	120928	2	120928	1
	Nozzle	17	220064	16	120980	15	220007	14	220006	5
	Electrode	11	220037	6	120926	6	120926	6	120926	5
	Swirl ring	12	220051	7	120925	7	120925	7	120925	1
FineCut™ parts	Deflector	—	—	—	—	—	—	13	120979	1
	Deflector, CE	—	—	—	—	—	—	18	220325	1
	Shield, ohmic	—	—	—	—	—	—	20	220404	1
	Retaining cap	—	—	—	—	—	—	2	120928	1
	Retaining cap, ohmic	—	—	—	—	—	—	2A	220061	1
	Nozzle	—	—	—	—	—	—	19	220329	5
	Electrode	—	—	—	—	—	—	6	120926	5
Swirl ring	—	—	—	—	—	—	7	120925	1	

**Genuine Hypertherm Consumables**

*The only way to ensure maximum performance*

**WARNING**  
 In countries following CE standards, shielded consumables parts must be used for hand cutting applications.  
 Unshielded consumables: maintain torch-to-work distance of approximately 3/16" (4.8 mm).

# Powermax 1650 T100M-2 machine torch assembly



**T100M-2 torch**

ITEM NUMBER	PART NUMBER	DESCRIPTION	QUANTITY
	059315*	T100M-2 machine torch assembly with 25 ft (7.6 m) lead	
	059324*	T100M-2 machine torch assembly with 35 ft (10.7 m) lead	
	059325*	T100M-2 machine torch assembly with 50 ft (15.2 m) lead	
	059326*	T100M-2 machine torch assembly with 75 ft (22.9 m) lead	
1	228523	T100M-2 torch main body replacement kit	1
2	075473	Machine screws	2
3	075503	Lock nuts	2
4	058519	O-ring	1
5	128639	Cap-off sensor replacement kit	1
6	075571	Cap-off sensor screws	2
7	228522	T100M-2 torch head repair kit	1
8	128643	Torch mounting sleeve replacement kit	1
9	075004	Torch mounting screws	3
17	128710	Torch positioning sleeve	1
11	228222	25 ft (7.6 m) torch lead replacement kit	1
12	228223	35 ft (10.7 m) torch lead replacement kit	1
13	228224	50 ft (15.2 m) torch lead replacement kit	1
	228225	75 ft (22.9 m) torch lead replacement kit	1
14	128638	ETR repair kit (Regional Repair Centers only)	1
	128645	Torch mounting kit (for reassembly after installation)	1

\* Assembly includes consumables

## Hypertherm®

[www.hypertherm.com](http://www.hypertherm.com)

Hypertherm, Powermax, and G3 Series are trademarks of Hypertherm, Inc. and may be registered in the United States and/or other countries.

© 9/09 Hypertherm, Inc. Revision 3  
881260